

1

About Allison

Over a decade of experience managing and training for tech companies

A fine art degree = a love of well-organized and designed data

LinkedIn: Allison-Leigh-Gonzalez
Email: agonzalez@pragmaticworks.com



















2




Why Power BI?

-  Power BI Desktop is free
-  Real time dashboards and interactive reports
-  Natural Language query & AI insights
-  Custom visualizations and custom connectors
-  Integration with Excel, Power Point, SharePoint and Teams

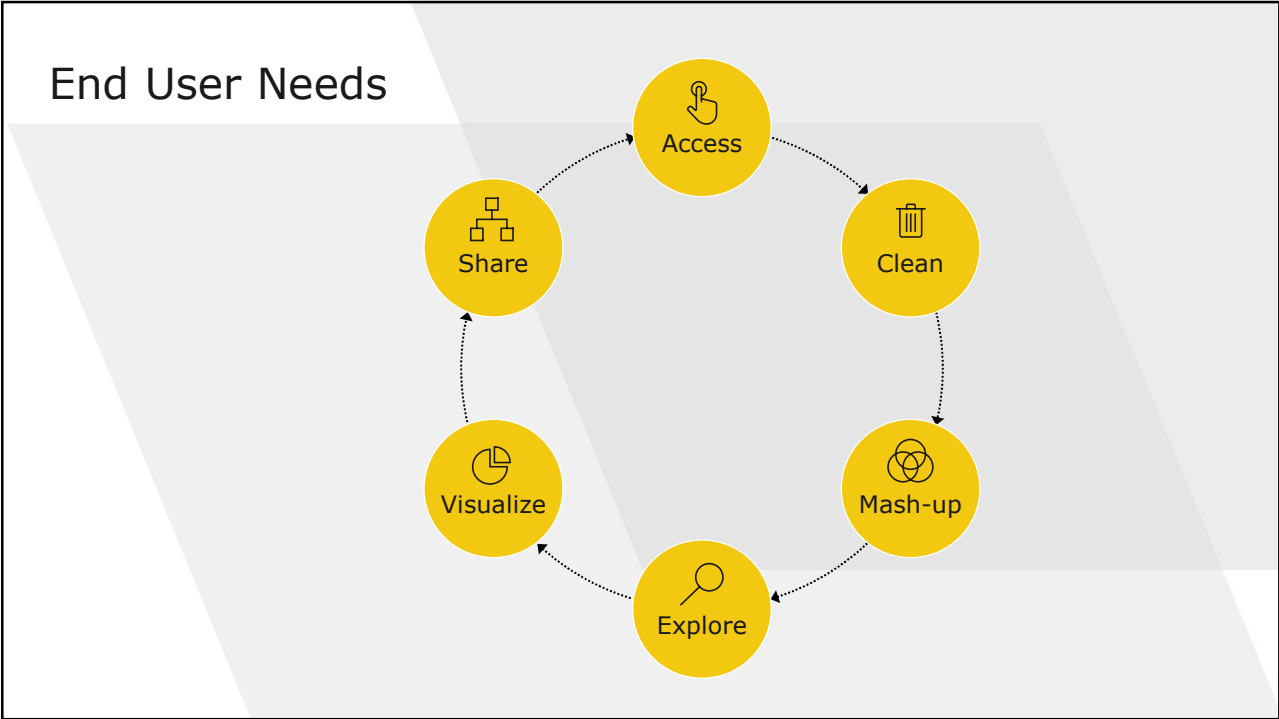
3

Microsoft Fabric

-  Data Factory
-  Real-Time Intelligence
-  Databases
-  Analytics
-  Industry Solutions
-  Power BI
-  Partner solutions

-  Copilot in Fabric
-  OneLake
-  Microsoft Purview

4



5

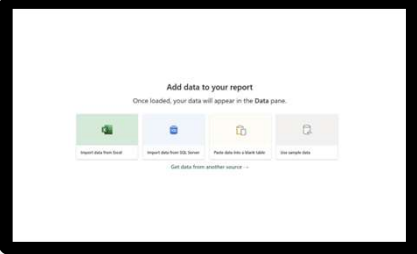
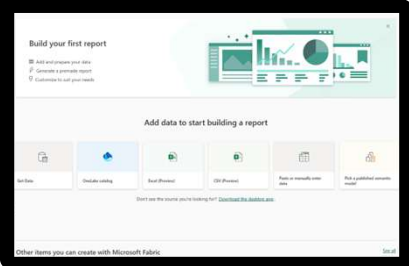
Access all your DATA

Data sources

<p>SaaS solutions e.g. Marketo, Salesforce, GitHub, Google Analytics</p>	<p>Organizational Corporate data sources or external data services</p>	<p>On-premises Data</p>	<p>Azure services Azure SQL, Stream Analytics...</p>	<p>Excel files</p>	<p>Power BI Desktop files Data from files, databases, Azure, and other sources</p>
---	---	--------------------------------	---	---------------------------	---

Connect to 200+ data sources, both on-premises and cloud

- Data from Applications
 - SaaS services that you already use
- Data from your organization
 - Content published by others in your org (Datasets and Dataflows)
- Big data and more
 - Azure data services, e.g. SQL DW, ADLS.
 - On-premises data sources, e.g. Oracle & SSAS
- Data from files
 - Import data from Text, CSV, Excel and Power BI Desktop files

6

Clean and mash-up your DATA

Consolidate data from a broad range of sources

- Merge or append queries to combine data from multiple queries into a single query

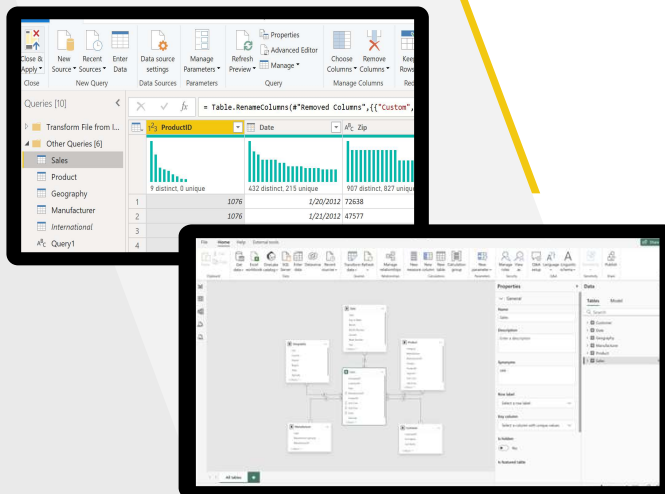
Transform data to fit your needs using intuitive UI

- Select data for inclusion
- Cleanse data and remove errors

Define calculations to generate new fields for use in reports

Develop advanced analytics using a combination of measures and relationships

- Uncover correlations, highlight exceptions and understand business outcomes



7

Explore your DATA

Explore data in a variety of ways and across multiple visualizations using drag and drop canvas

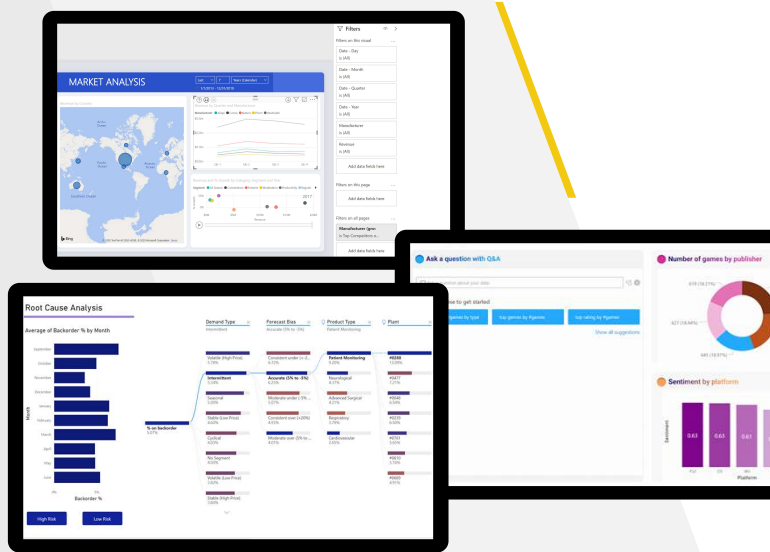
Dig deeper into your reports

- Drill-down in your hierarchical data
- Filter, sort, hover over and highlight data

Leverage Quick Insights to find insights in your data

Ask questions of your data in natural language with Q&A

- Type questions in plain language
- Q&A intelligently filters, sorts, aggregates, groups and displays data based on the question



8

Visualize your DATA

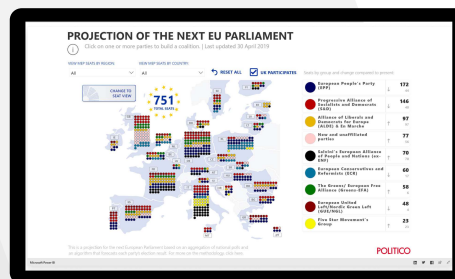
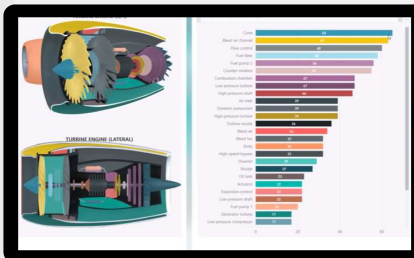
Visualize data in a variety of ways

Growing number of visualization types

- Donuts, basic area, waterfall, filled maps, tree maps, funnel, gauges combo charts and more
- Custom visuals available from Power BI Visuals Marketplace
- Tools to develop, test, package new custom visuals

Visualizations on report page are connected – select value in one visualization to change other visualizations

Full screen pop out mode for report visuals to show additional details



9

Bring your story to life with DATA

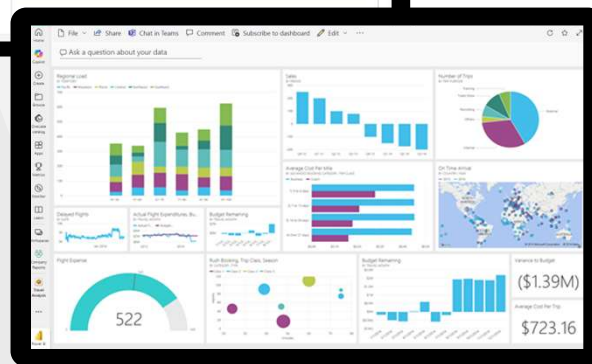
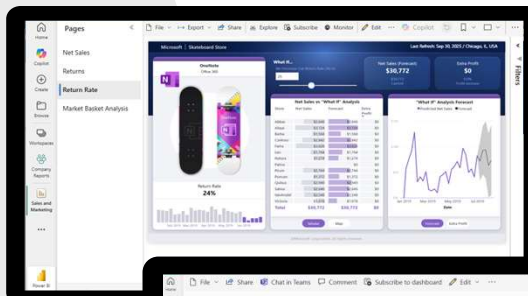
Save Power BI Desktop report files and easily publish them to powerbi.com

Access dashboards using native mobile apps for Windows, iOS and Android

Share as appropriate with other Power BI users in your organization

Package your reports in apps for easy consumption and control

Easily embed interactive Power BI visualizations in blog posts, websites, through emails or social media With Power BI Publish to web



10